





Roland Pickstock

- Founder of The Pickstock Group, a privately owned group of companies
- The Pickstock Group 2012 - US\$253 Million Revenue
- Specializes in Property Development, Construction, Investment & Food
- Over 30 years of construction and development experience
- Key projects include, London 2012, the G8 Summit and multiple retail developments for Walmart, Tesco and Sainsbury's.
- Current project pipeline \$1.5bn

Michael Harris

- Founder & 100% share holder of Total Network Solution Ltd, from 1990 to sale of company to British Telecom (BT Group plc) in 2005
- Chairman's a number of successful companies including Voice Comms Warehouse, a leading distributor of communications security products
- Ernst & Young winner 2001
- The New Saints football club Welsh soccer champions, Hog Parks & a multi-million dollar leisure complex

Structure

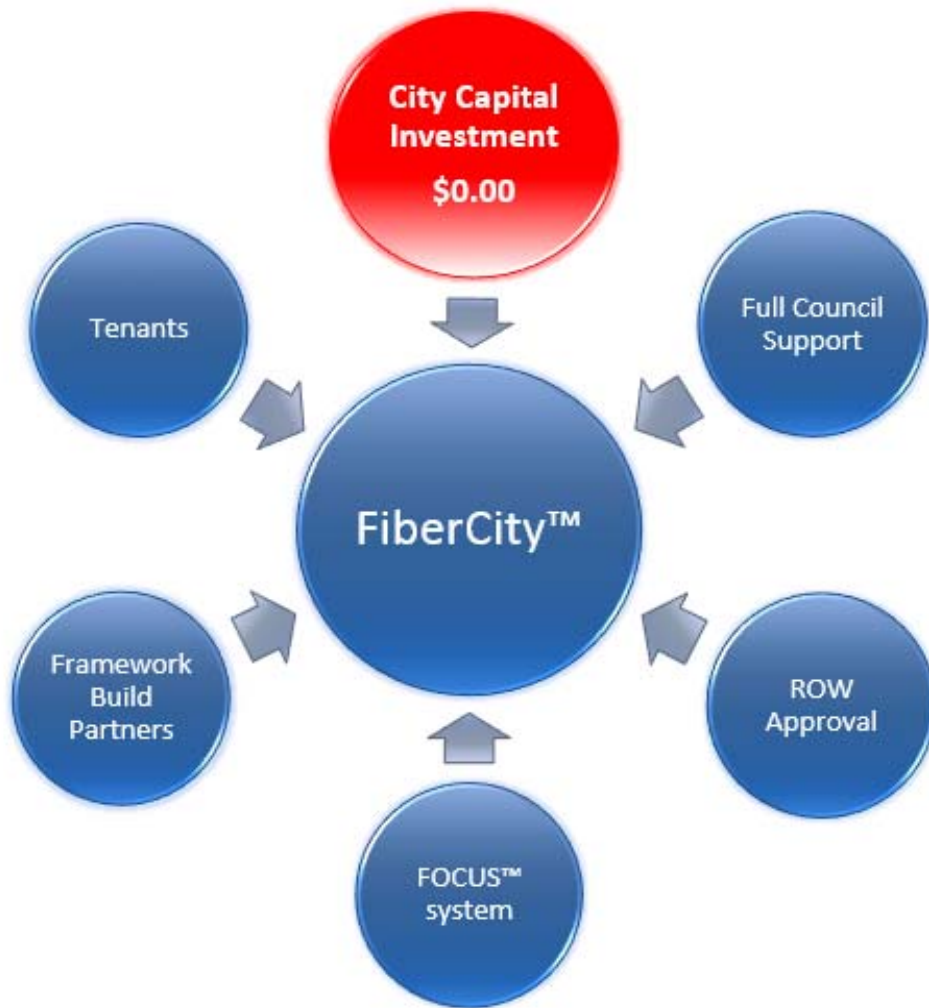
Proposal

Delivery

IKT Analysis



No Risk to the City



- ✓ Non-Exclusive Agreement
 - ✓ City-wide build
 - ✓ No demographic segmentation
 - ✓ Fiber connectivity to every premise that requests connectivity
-
- ✓ Symmetrical **Gigabit** infrastructure

Structure

Proposal

Citywide Build

Delivery

IKT Analysis



- Municipal buildings, public Wi-Fi, healthcare, traffic control, resilient fiber rings
- Mobile density, data centers
- Large corporate and SME
- Fiber to the Home/MDU

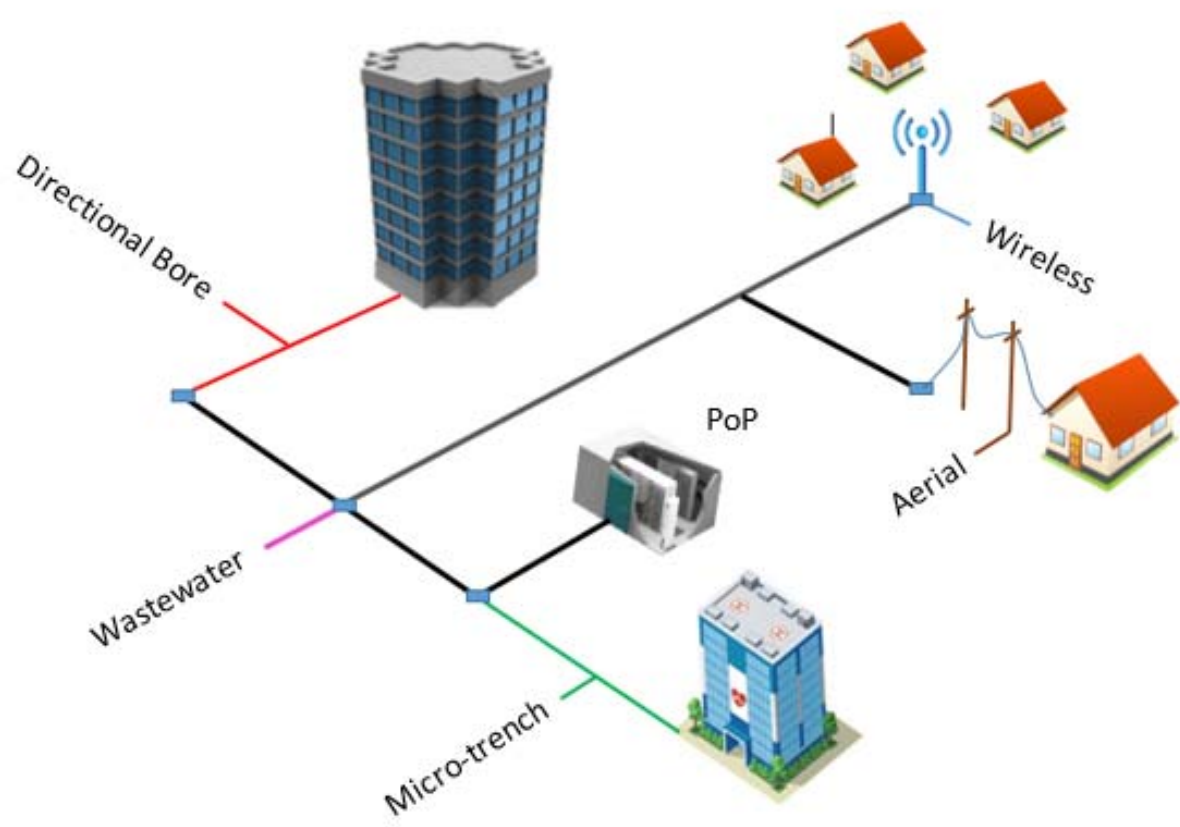


Structure

Proposal

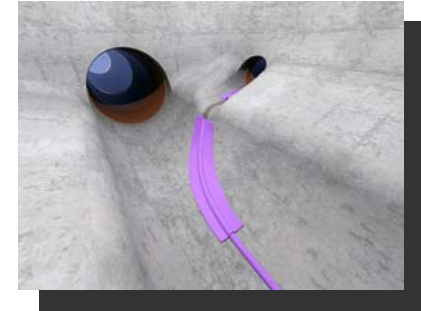
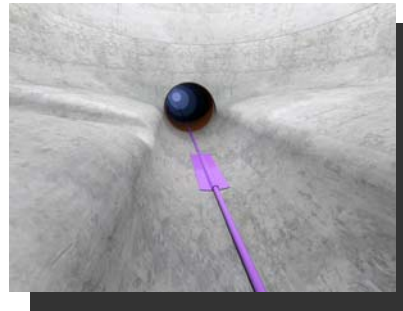
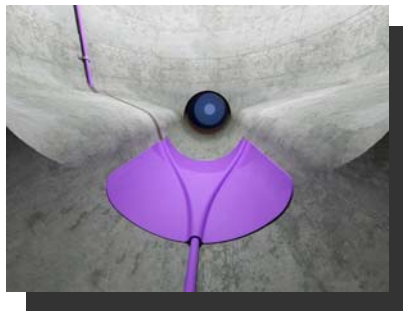
Delivery
FOCUS™ System

IKT Analysis



FOCUS™ system

- No Memory Coil
- High elasticity, chemical resistant, anti-static and born out of North Sea Exploration usage
- Low viscosity for submerged use
- Installation process ISO9001 approved
- Environmentally friendly with significant social disruption
- Pre, During and Post video recording undertaken and passed to the city for their records
- Lining rehabilitation techniques can be used over cable
- Tested to withstand 4,800 PSI high pressure direction cleaning
- Lower risk given typical depth of 10' underground
- Fully Insurable system
- Whole saw adaptor in development to connect to existing whole saw maintenance machine

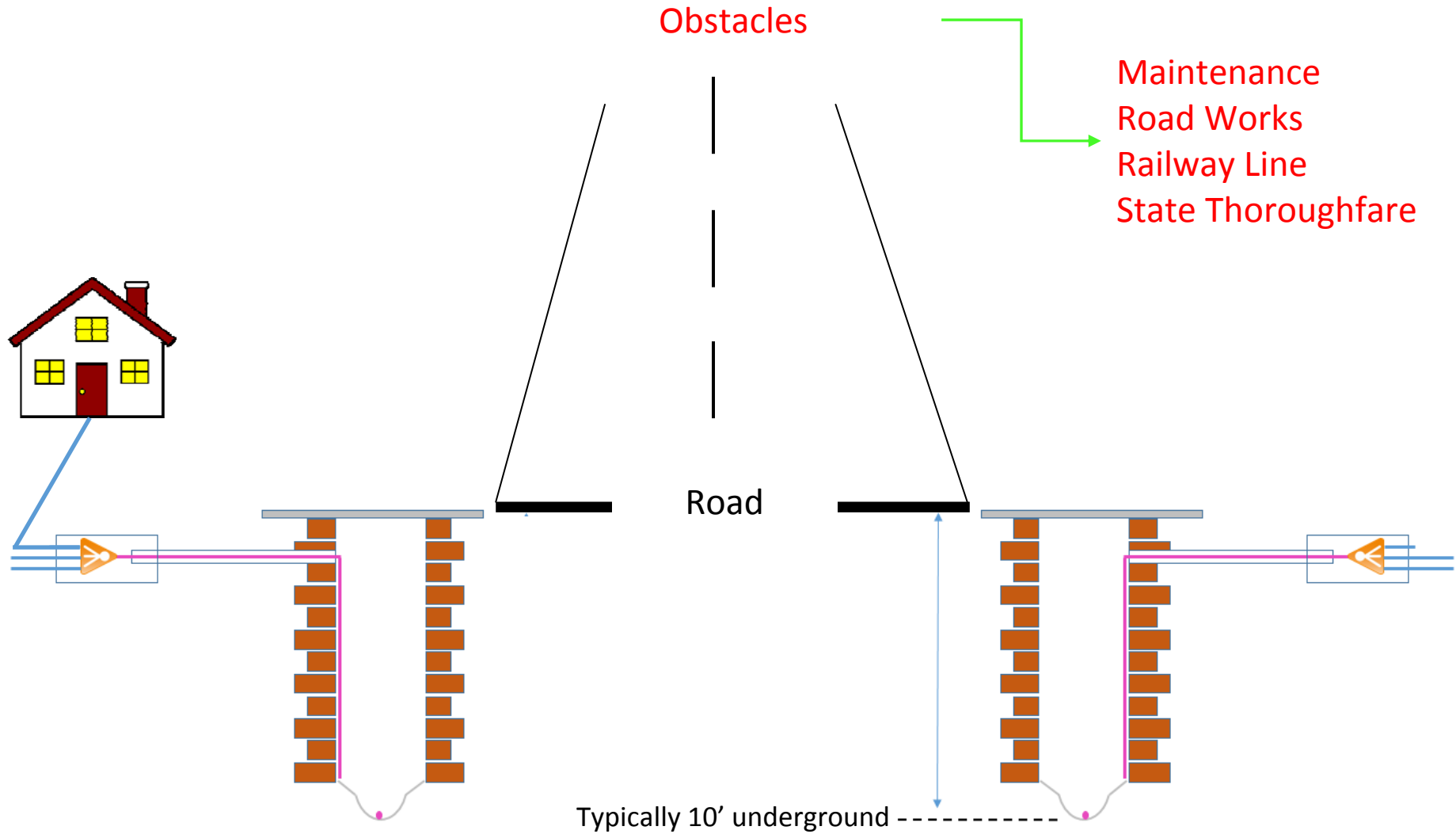


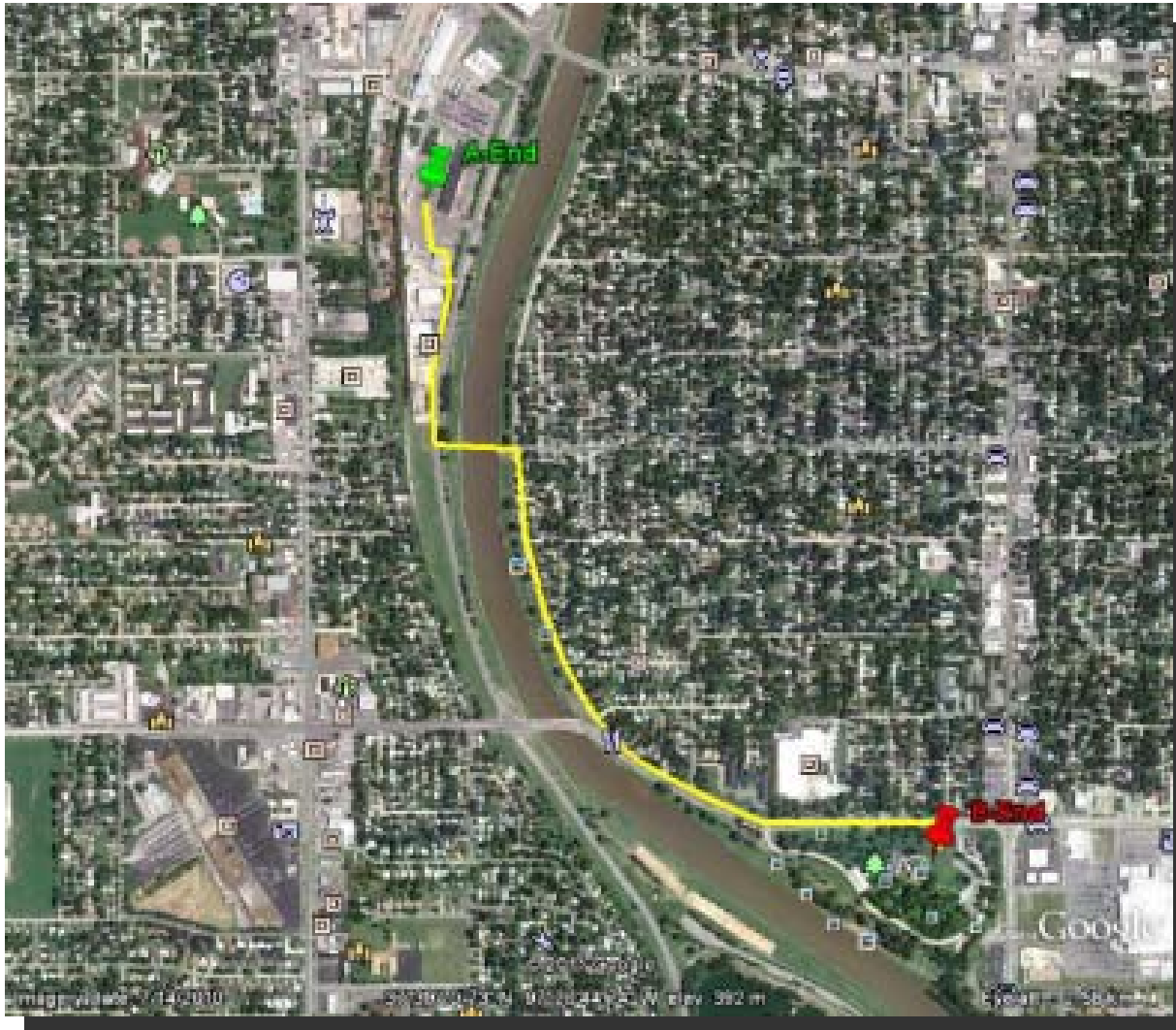
Structure

Proposal

Delivery
Wastewater Technology

IKT Analysis





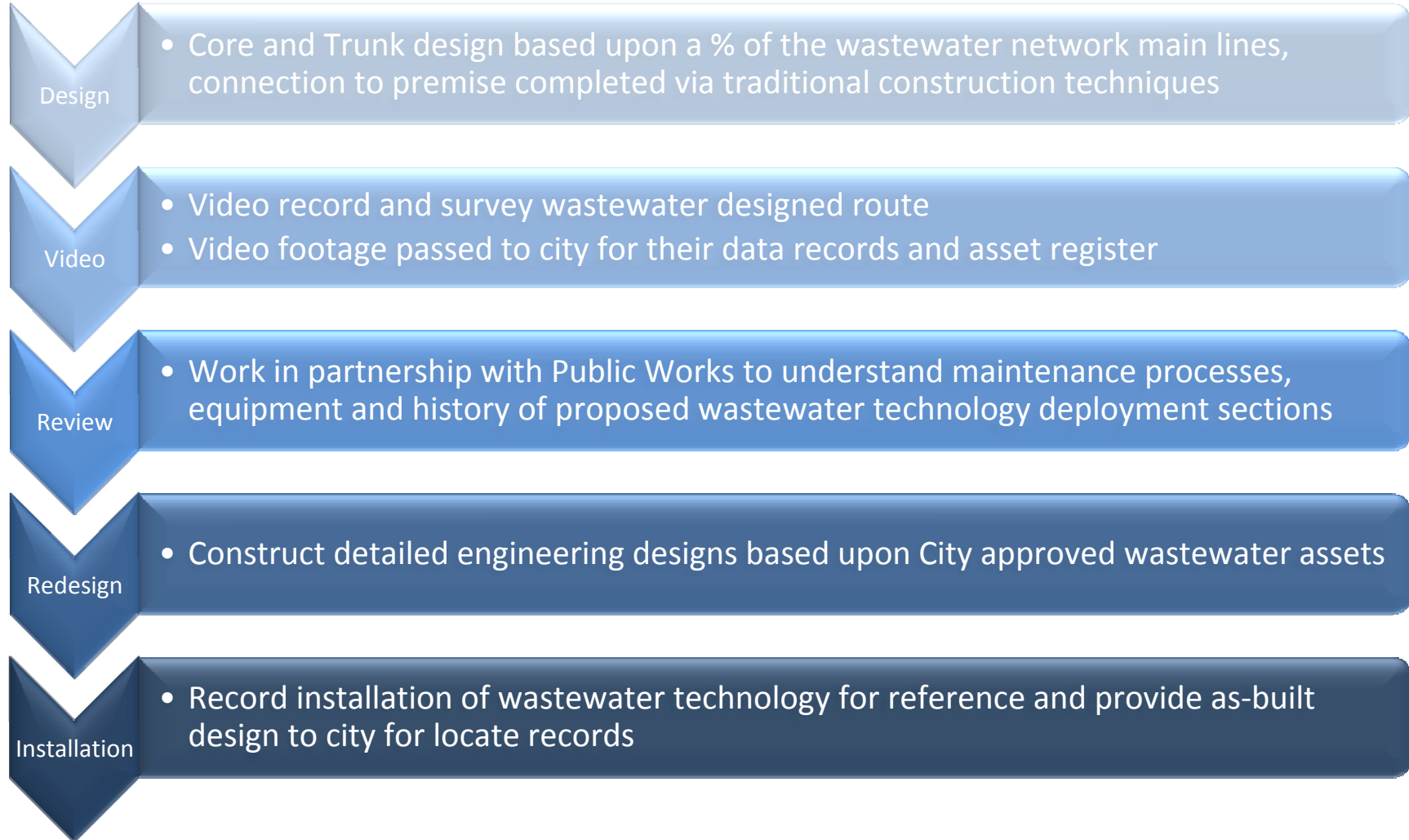
- 300ft River Crossing.
- 3 x Main Highways
- Limited Road closing hrs
- Budget constraints
- Yesterday build timeframe
- Limited Support Resource
- Current & planned road projects created potential traditional construction delay

Structure

Proposal

Delivery
Risk Mitigation

IKT Analysis



Structure

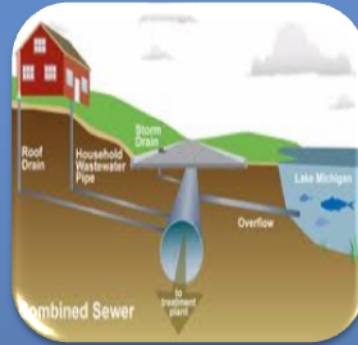
Proposal

Delivery
Selection Process

IKT Analysis



Storm



Combined



Sanitary

Preferred order of use

- Storm water and sanitary systems often owned / managed by different entities.
- The assets can be combined to complete the FOCUS™ Wastewater fibre deployment.

Structure

Proposal

Delivery
Infrastructure Inspection

IKT Analysis



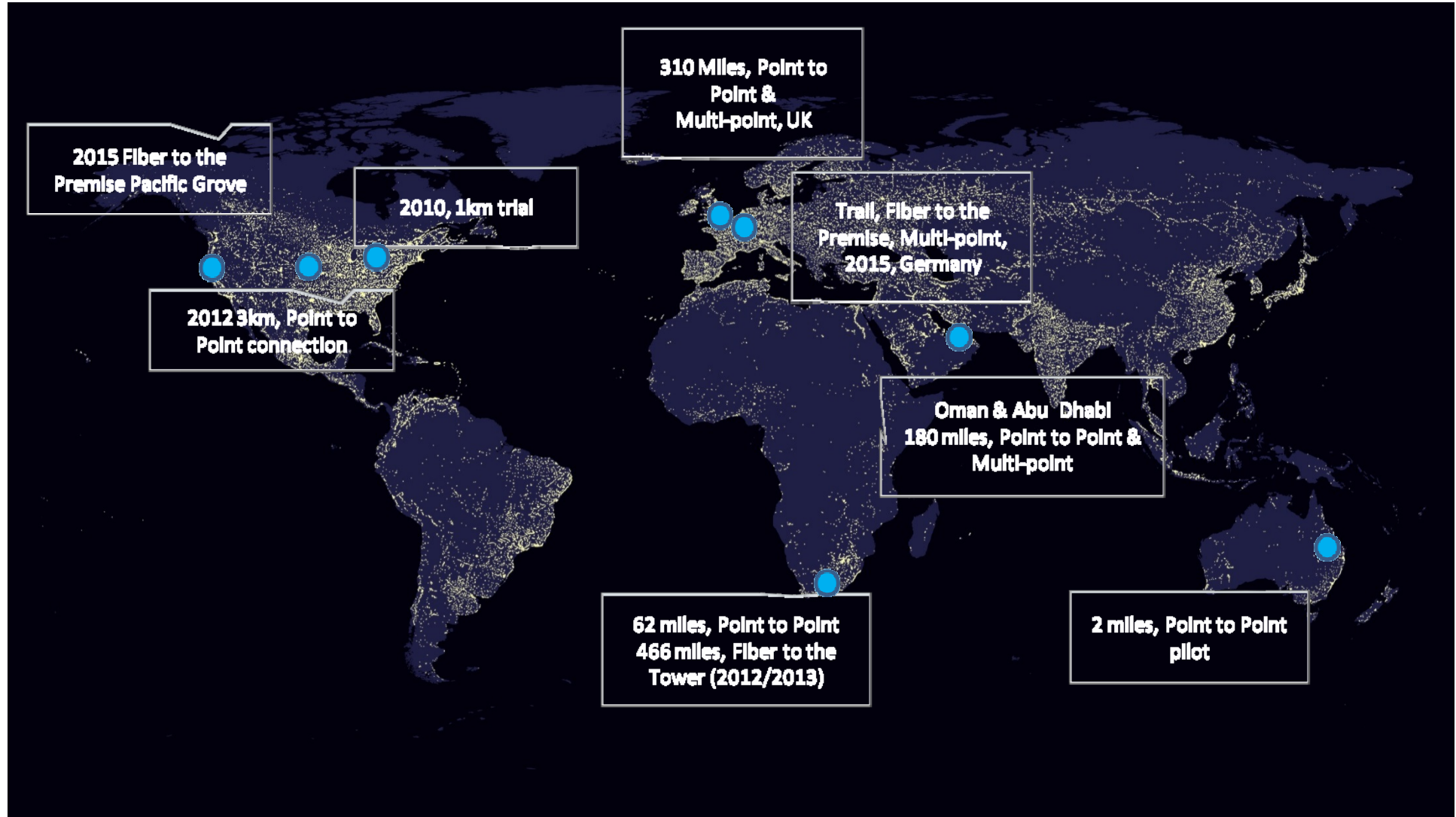
- 360° view record of the manhole.
- Diameter of the pipeline.
- Type of pipe.
- Condition of the wastewater pipeline.
- Determine direction of flow.
- Junction details.
- Locate blind connections along the pipeline.
- Level changes.
- Amount of sediment (%).
- Any blockages.
- Root Ingress.
- The length of the sections.
- Any other observations.

Structure

Proposal

Delivery
Global Deployments

IKT Analysis



Structure

Proposal

Delivery
Framework Partners

IKT Analysis



SiFi believe in working with highly reputable companies with unrivalled experience within their chosen fields. Creating a synergy between our own internal expertise and those of our partners we create sustainable projects that serve each community on an individual basis.

Summary – FiberCity™ Model



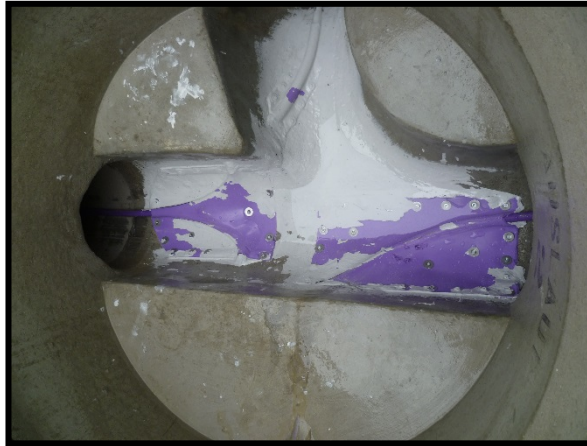
- ✓ Risk Mitigated, 100% Privately funded and built next generation fiber network
- ✓ Economic Development platform to foster innovation and drive revenue into the city
- ✓ No demographic segmentation – everyone has the choice to receive fiber connectivity
- ✓ Competitive Open Access model - City-controlled and later owned infrastructure
- ✓ Utilization of less socially disruptive construction techniques, yet rapid
- ✓ Fully insured and maintained throughout entire project lifespan
- ✓ Designed and built by US award winning and top ranked engineering firms



- Test track – Show Wastewater fibre installation method.
- Test to DIN 19523
- Test durability of manifolds (Straight through , entry and exit) and Fibre Cable.
- 60 test Cycles = 30-60 years installation life
- High Pressure Cleaning 100 bar
- Forward velocity 1.0+/- 0.01m/s
- Backward Velocity 0.1+/- 0.02m/s



- Exit Manifold –
Left hand exit cut
into bench and
attached to
manhole wall
- Change of
Direction –
wishbone and 90
degree manifold –
cut into side of
benching



20 Cycles (10-20 year equivalent)



40 Cycles (20-40 year equivalent)



60 Cycles (30-60 year equivalent)

Structure

Proposal

Delivery

IKT Analysis

Test Track



- Minimal damage over life cycle of the technology
- Concrete dilapidation evidenced, due to concrete not being fully set prior to trials



Manifold Installation



Manifold Installation - 60 Cycles

